



Vanilla

Open Source Business Intelligence

Version 2.0

How to change port and IP

September 2009
Vanilla Version 2,0
Patrick Beaucamp / Gaël Charbonnier / Ludovic Camus
BPM Conseil
Contact : patrick.beaucamp@bpm-conseil.com



Index

Introduction:.....	3
I. Tomcat configuration.....	3
II Vanilla Configuration.....	3
1.Servers configuration.....	3
2.Repository configuration.....	5
3.Portal configuration.....	6



Introduction:

This document describe the steps to set a new port or a new IP to the vanilla server

I. Tomcat configuration.

Ensure that your server is down. You have to edit the file server.xml in <vanilla-tomcat-dir>\conf

```
93 <!-- Define a non-SSL HTTP/1.1 Connector on port 8080 -->
94 <Connector port="8080" maxHttpHeaderSize="8192"
95     maxThreads="150" minSpareThreads="25" maxSpareThreads="75"
96     enableLookups="false" redirectPort="8443" acceptCount="100"
97     connectionTimeout="20000" disableUploadTimeout="true" />
98 - <!-- Note : To disable connection timeouts, set connectionTimeout value
```

Change the port ligne 94.

II Vanilla Configuration.

1. Servers configuration.

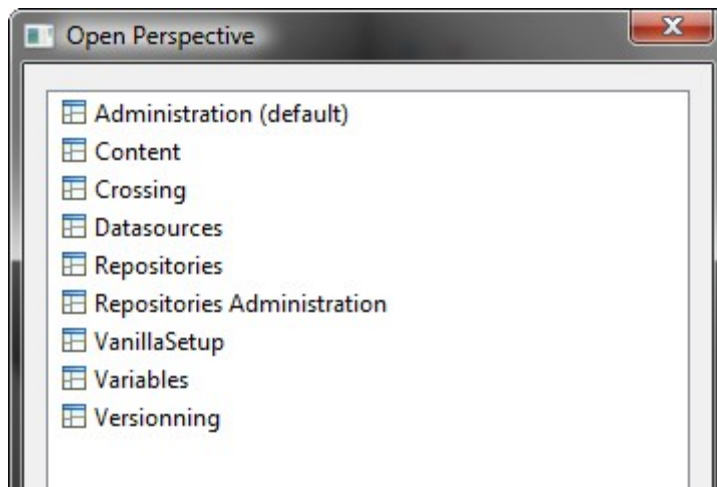
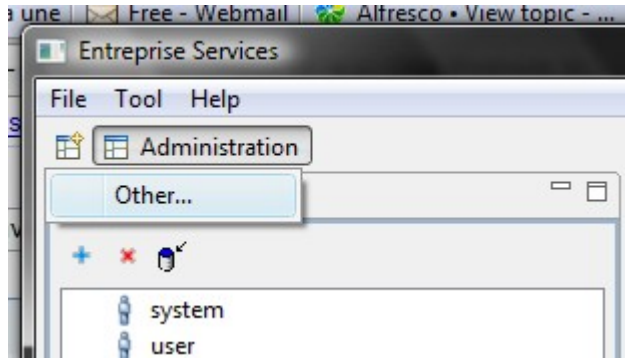
Start your Vanilla server.

Launch your EnterpriseServices and change the 'Preferences Url' by clicking on « Change url » button.

A screenshot of a dialog box titled "Choose a database connection and a repository". The dialog has a blue title bar with a close button (X) on the right. It contains four input fields: "Login" with the text "system", "Password" with masked characters "••••••", "Repository" with a dropdown menu showing "Vanilla", and "Preferences Url" with the text "http://localhost:9090/Preferences". At the bottom right, there are two buttons: "Change url" and "Select".



Open the VanillaSetup perspective:





 The screenshot shows a web browser window titled "Enterprise Services" with a menu bar (File, Tool, Help) and tabs for "VanillaSetup" and "Administration". The "VanillaAdministrator" tab is active, displaying a configuration table with the following fields and values:

Authentication	true
FreeAnalysis URL	http://localhost:8080/FreeAnalysisWeb
FreeAnalysisSchemaDesignerWeb URL	http://localhost:8080/FreeAnalysisSchemaDesigner
FreeWebReport URL	http://localhost:8080/FreeWebReport
FreeDashboard URL	
FreeMetrics URL	
Preferences URL	http://localhost:8080/Preferences
BIScheduler URL	
Workbook URL	http://localhost:8080/workbook/
Vanilla Portal URL	http://localhost:8080/vanilla
Vanilla Portal Path	C:\vanilla-tomcat-mysql-1.50-ce\webapps\vanilla.war
BirtViewer URL	http://localhost:8080/WebViewer/
BirtViewer Path	C:\vanilla-tomcat-mysql-1.50-ce\webapps\WebViewer.war
Orbeon Url	http://localhost:8080/orbeon/xforms-jsp/
Orbeon path	C:\vanilla-tomcat-mysql-1.50-ce\webapps\orbeon\xforms-jsp

 An "Update" button is located at the bottom of the configuration area.

Replace all « localhost » instance by your IP and all « 8080 » instance by your port, then update

2. Repository configuration.

Open the Repositories Administration perspective and click on your repository entry.

 The screenshot shows a "Properties" dialog box with the following fields and values:

Name	Vanilla
Society	bpm-conseil
URL	http://localhost:8080/BIRepository
Database key	bpm

 An "Update" button is located at the bottom of the dialog.



Replace all « localhost » instance by your IP and all « 8080 » instance by your port, then update.

3. Portal configuration.

Start your server. Open the Home perspective.

```

File  Tool  Help
Home  Administration
Home
function Connect(user, pwd) {
    document.getElementById('__login').value = user;
    document.getElementById('__pwd').value = pwd;
    document.getElementById('_login_').submit();
}
</script>
</head>
<body onload="getNew()" >
<div id="centre">
    <div id="enTete">Welcome to vanilla 1.50 <br /> <h2> Sentinelle</h2></div>
    <div id="right">
        <div> &nbsp;< /> &nbsp;</div>
        <div id="login">
            <form id=" _login_ " method=post action="http://localhost:8080/vanilla/vanilla.jsp">
                <p>username: <input name=" _login " id=" _login " type="text" class="input"></p>
                <p>password: <input name=" _pwd " id=" _pwd " type="password" class="input"></p>
                <input type="submit" value="submit">
            </form>
        </div>
    </div>
    <div id="contenu">
        <div id="informations">
            <h2>To have more informations:</h2>
            <ul>

```

Looking for the surrounded line above, change the IP and the port, then apply.

Now you can connect to the portal in the address: <http://IP:new port/vanilla>.