



# Vanilla

## Open Source Business Intelligence

Version 1.50

### Post installation instruction

June 2009  
Vanilla\_150\_Post\_Installation\_Instruction.odt  
Patrick Beaucamp  
BPM Conseil  
Contact : [patrick.beaucamp@bpm-conseil.com](mailto:patrick.beaucamp@bpm-conseil.com)



## Index

Introduction.....	3
BIRT / FreeMetadata PlugIN.....	4
Manual configuration .....	5
1. Open the entreprise services .....	5
2. Open the VanillaSetup view.....	6
3. Set your own parameters.....	7
FreeDashboard configuration.....	8
FreeMetaData configuration.....	9



## **Introduction**

Vanilla version 1.50 introduce new concepts & features, and correct some previous choice (for document localisation)

The instruction bellow applies to :

- Vanilla version 1.3 RCx (for early platform users)
- Vanilla 1.50
- New Users of Vanilla BI Platform



## **BIRT / FreeMetadata PlugIN**

Vanilla FreeMetadata PlugIn for BIRT is located in

Download BIRT (version 2.3)

[http://www.eclipse.org/downloads/download.php?file=/birt/downloads/drops/R-R1-2\\_3\\_1-200809221151/birt-report-designer-all-in-one-2\\_3\\_1.zip](http://www.eclipse.org/downloads/download.php?file=/birt/downloads/drops/R-R1-2_3_1-200809221151/birt-report-designer-all-in-one-2_3_1.zip)

Install BIRT Open Source Reporting package

Install the Vanilla FreeMetadata PlugIn for BIRT in the **/plugins** folder



## Manual configuration

to have more information read the upgrade documentation.

Using Enterprise Services package, modify different location (for Birt Viewer, ...) using the « VanillaSetup » perspective (see below). Usually, only 2 entries need to be modified :

-BirtViewerPath

-Vanilla Portal Path

Start your server

### 1. Open the enterprise services

Choose a database connection and a repository

Login

Password

Repository

Preferences Url

On the first start-up change this url if it is not good

Choose a database connection and a repository

Login

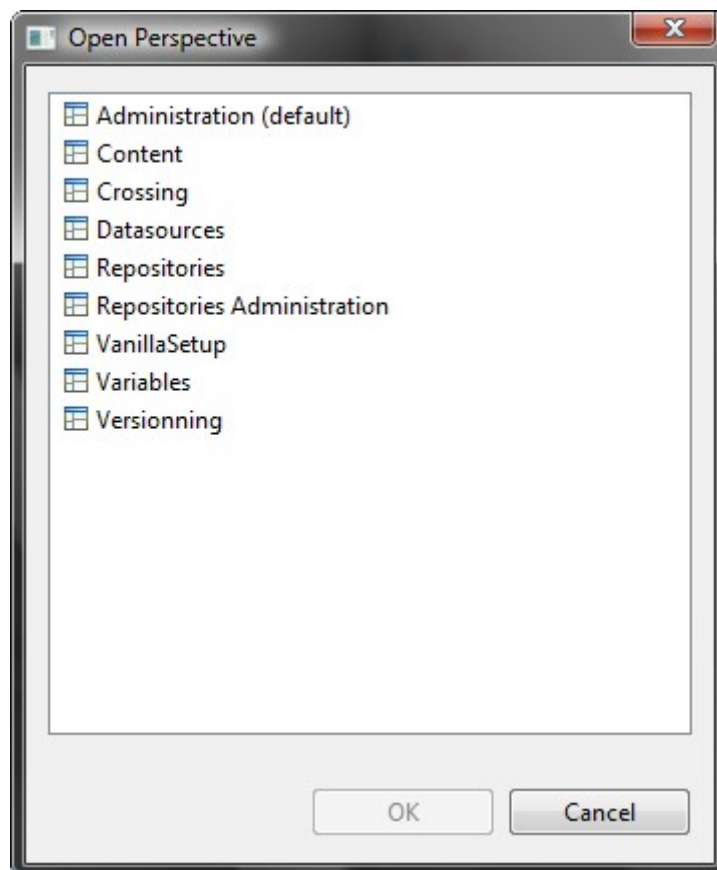
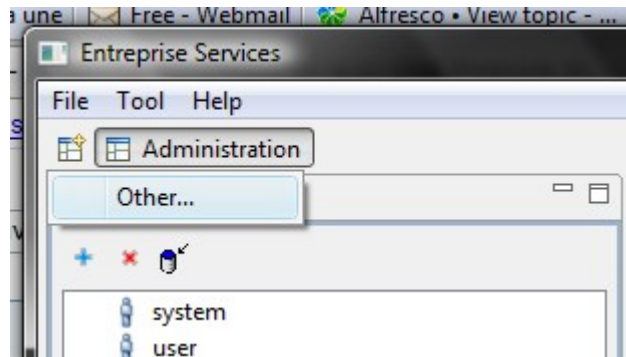
Password

Repository

Preferences Url



## 2. Open the VanillaSetup view





### 3. Set your own parameters

Parameter	Value
Authentification	true
FreeAnalysis URL	http://localhost:8080/FreeAnalysisWeb
FreeAnalysisSchemaDesignerWeb URL	http://localhost:8080/FreeAnalysisSchemaDesigner
FreeWebReport URL	http://localhost:8080/FreeWebReport
FreeDashboard URL	
FreeMetrics URL	
Preferences URL	http://localhost:8080/Preferences
BIScheduler URL	
Workbook URL	http://localhost:8080/workbook/
Vanilla Portal URL	http://localhost:8080/vanilla
Vanilla Portal Path	C:\vanilla-tomcat-mysql-1.50-ce\webapps\vanilla.war
BirtViewer URL	http://localhost:8080/WebView/
BirtViewer Path	C:\vanilla-tomcat-mysql-1.50-ce\webapps\WebView.war
Orbeon Url	http://localhost:8080/orbeon/xforms-jsp/
Orbeon path	C:\vanilla-tomcat-mysql-1.50-ce\webapps\orbeon\xforms-jsp

Update

The installation server's path



## FreeDashboard configuration

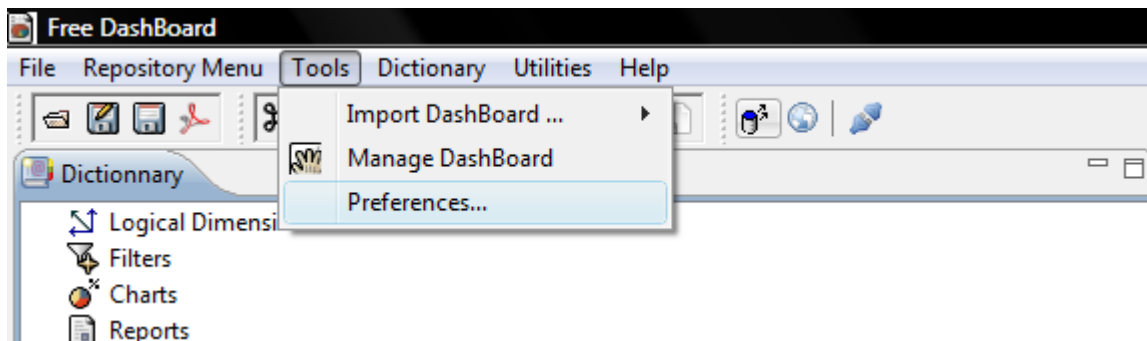
When you run FreeDashboard for the first time, it is necessary to manually configure 2 folders, using the interface « Tools + Preferences »

In the « Deployment Server » entry, you have to setup :

-Deployment WebApp folder : (use the vanilla.war target in your current Vanilla installation)

-Deployment Server URL : URL that contains your server address and reference to the « vanilla » Webapps

- Open FreeDashboardDesigner
- Open the menu tools > preferences



- Change the deployment WebApp folder.



## FreeMetadata configuration

When you run FreeDashboard for the first time, it is necessary to manually configure the Scheduler server Url if you want to schedule the execution of some profiling Queries, using the interface «File + Preferences »

Security Provider Url : it is the Url taht will provide the Group List to apply security on the metadata model

Bpm Bi Repository Url : the default Vanilla repository url used in the different dialog boxes.

