



Vanilla

Open Source Business Intelligence

Version 1.50

Platform Installation

June2009
Vanilla Version 1.50
Patrick Beaucamp
BPM Conseil
Contact : patrick.beaucamp@bpm-conseil.com



Table des matières

Introduction.....	3
Vanilla Download.....	4
Additional downloads.....	4
MySQL database installation.....	5
Account.....	5
Database installation.....	5
PostGres database installation.....	6
Account.....	6
Database installation.....	6
Vanilla Server installation.....	7
Test of Vanilla Server.....	13
Post Installation Instruction:	14
to have more information read the upgrade documentation.....	14
1. Open the entreprise services	14
2. Open the VanillaSetup view.....	15
3. Set your own parameters.....	16



Introduction

Vanilla is the Open Source Business Intelligence Platform sponsored by BPM-Conseil.

Vanilla provides an integrated and secured workspace to deliver business intelligence documents to end users (documents that leverage the information stored in enterprise database).

Document [BPM_Vanilla_Presentation_User_EN.PDF](#) provides detailed informations on every kind of BI document supported by the platform (reports , Olap views, dashboards , key performance indicators and maps) and on the functions available et to manipulate document from the BI Portal.

Along with those user features, Vanilla platform provides packages for BI developers & BI administrators :

- FreeMetadata : component to create an abstraction layer between database and business views, where developer can secure access to different resources using group security

- BI Profiling : component to define profiling and data quality criterias for data exposed in Metadata documents.

- BI Scheduler : scheduler based on quartz to manage the production and delivery of various BI components and BI (ETL job, report or dashboard creation, data profiling execution, KPI database alimentation)

- BI Workflow : package to create and manage BI process, based on proven Bonita platform, that allow definition of process such as « data extraction /data validation/data distribution », involving automatic process & manual validation

- «Enterprise Service » : administration package that provides features such as deployment packages management between servers, impact analysis on different objects, security of various documents and direct access to documents (stored in XML).

All thos features are described in document [BPM_Vanilla_Presentation_Developer_EN.pdf](#)

Vanilla specificity stands in high productivity components for developers & administrators, that reduce the cycle « prototype / development / production / maintenance » of any BI project.

This document is about Vanilla installation, using MySQL Version of Vanilla 1.31 community edition



Vanilla Download

Vanilla 1.50 is available for download at <http://www.bpm-conseil.org/vanilla150>

To run a Vanilla server, you need 2 packages :

MySQL database schema <http://www.bpm-conseil.org/vanilla150/databases.zip>

Vanilla server : <http://www.bpm-conseil.org/vanilla150/installers/vanilla-tomcat-mysql-1.50-ce-setup.exe>

Additional downloads

In order to develop Vanilla BI application, you need to download & install the various design packages : <http://www.bpm-conseil.org/vanilla150/designers.zip>

In order to manage Vanilla server & application, you need to download & install the various admin packages : <http://www.bpm-conseil.org/vanilla150/administrators.zip>

In order to visualize the designed objects, you need to download & install the various user packages : <http://www.bpm-conseil.org/vanilla150/Users.zip>

If you want to test Vanilla 1.50 outside of MySQL area, simply download, unzip and run the embeded Derby version : <http://www.bpm-conseil.org/vanilla150/derby/vanilla-tomcat-derby-1.50-ce.zip>

Otherwise you can download and install the PostGres version. simply download :

- <http://www.bpm-conseil.org/vanilla150/pgsql/vanilla-tomcat-pgsql-1.50-ce.zip>
- <http://www.bpm-conseil.org/vanilla150/pgsql/databases.zip>
- http://www.bpm-conseil.org/vanilla150/pgsql/entrepriseservices_psql.zip



MySQL database installation

Account

Using MySQL 5.0 or later, first create a user :

login name : biplatform

password : biplatform

Using this standard user/password will prevent you from performing time consuming modification in parameter files to modify the standard account that manage Vanilla repositories. If you want to use another MySQL account, please refer to the advanced installation guide to understand how Vanilla and its repositories are configured.

Database installation

This section is for new Vanilla installation. To upgrade from Vanilla 1.3x or from Vanilla 1.4x, please refer to the upgrade documentation.

Using MySQL admin or any other MySQL interface, simply restore the 3 repositories :

repository.sql : mandatory to run Vanilla server

vanilla.sql : mandatory to run Vanilla server

sampledata.sql : sample database, : mandatory to run Vanilla examples



PostGres database installation

Account

Using PgAdminIII or later, first create a user :

login name : biplatform

password : biplatform

Using this standard user/password will prevent you from performing time consuming modification in parameter files to modify the standard account that manage Vanilla repositories.

Database installation

This section is for new Vanilla installation. To upgrade from Vanilla 1.3x or from Vanilla 1.4x, please refer to the upgrade documentation.

Using PgAdminIII or any other pgsq interface, simply restore the 3 repositories :

repository.backup : mandatory to run Vanilla server

vanilla.backup : mandatory to run Vanilla server

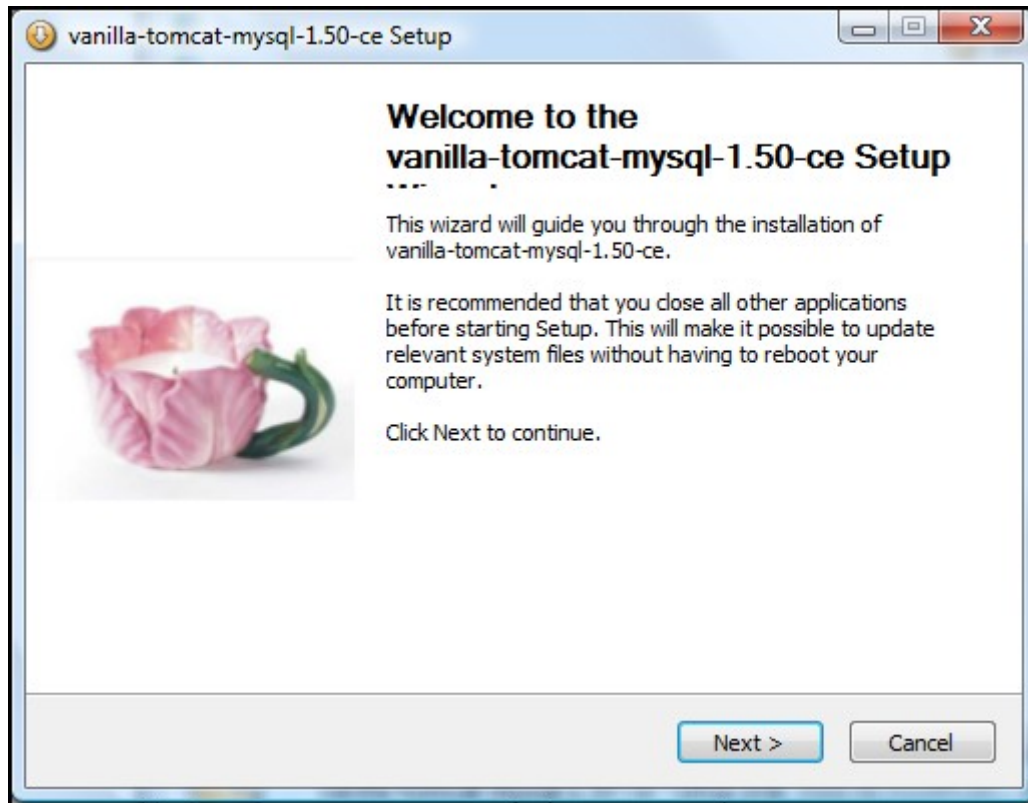
sampledata.backup : sample database, : mandatory to run Vanilla examples



Vanilla Server installation

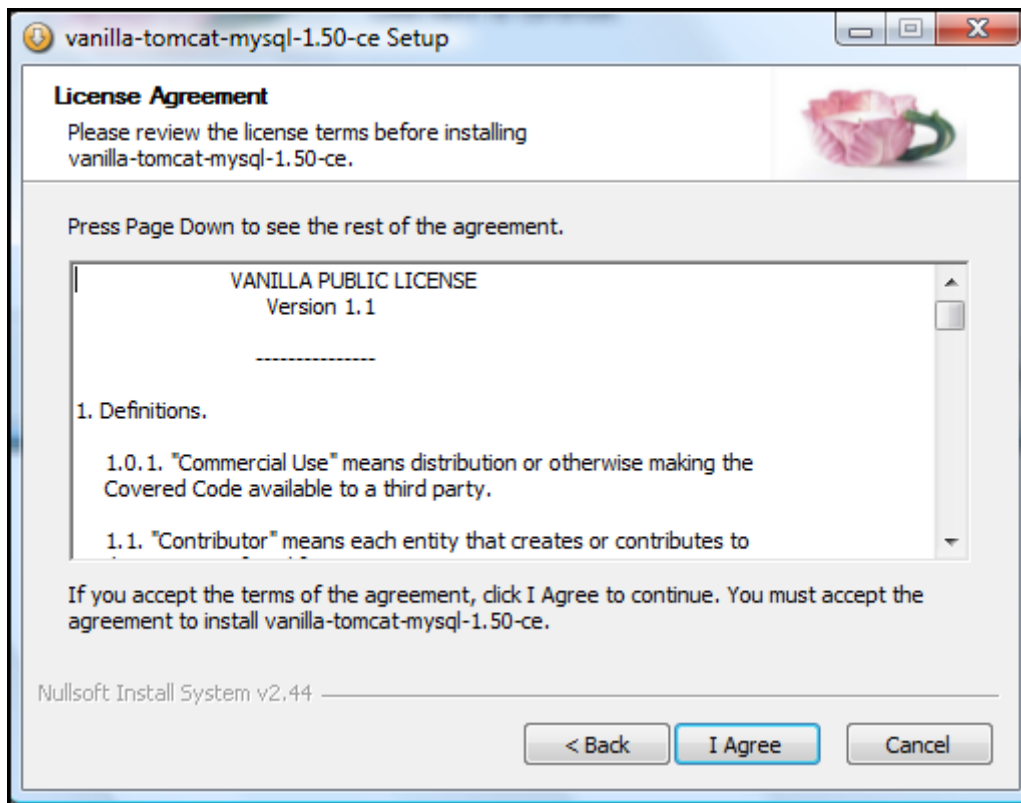
Run package `vanilla-tomcat-mysql-1.50-ce-setup.exe` and follow the instruction

Installation welcome interface



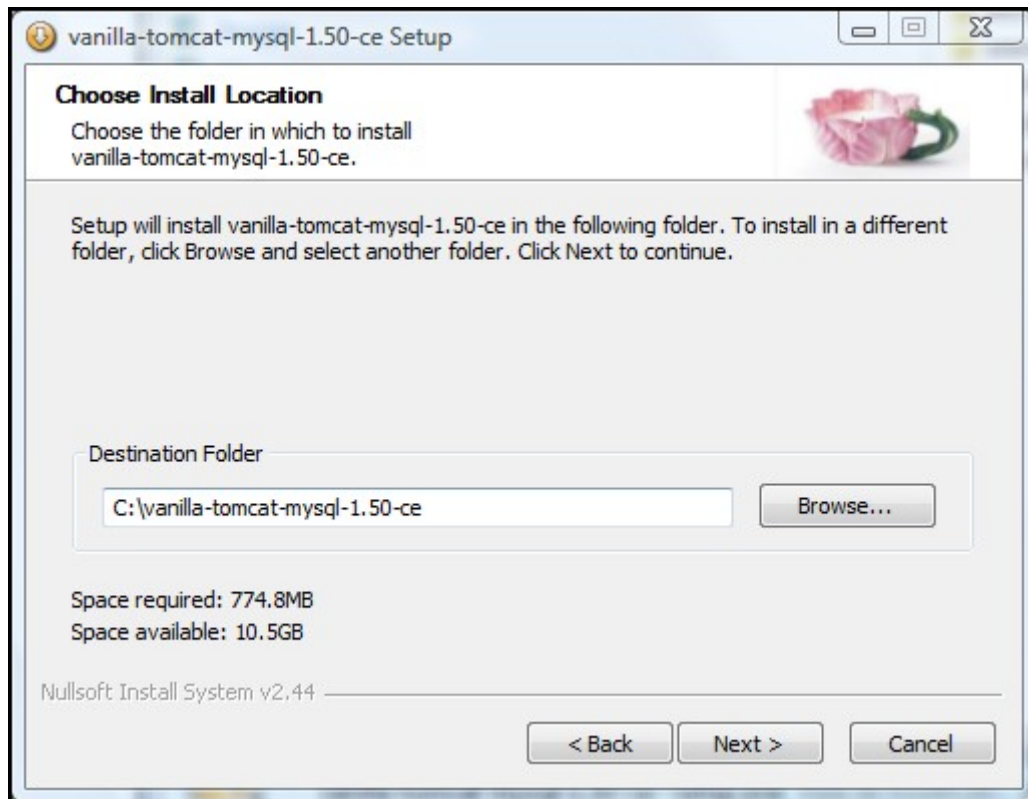


Vanilla Licence agreement



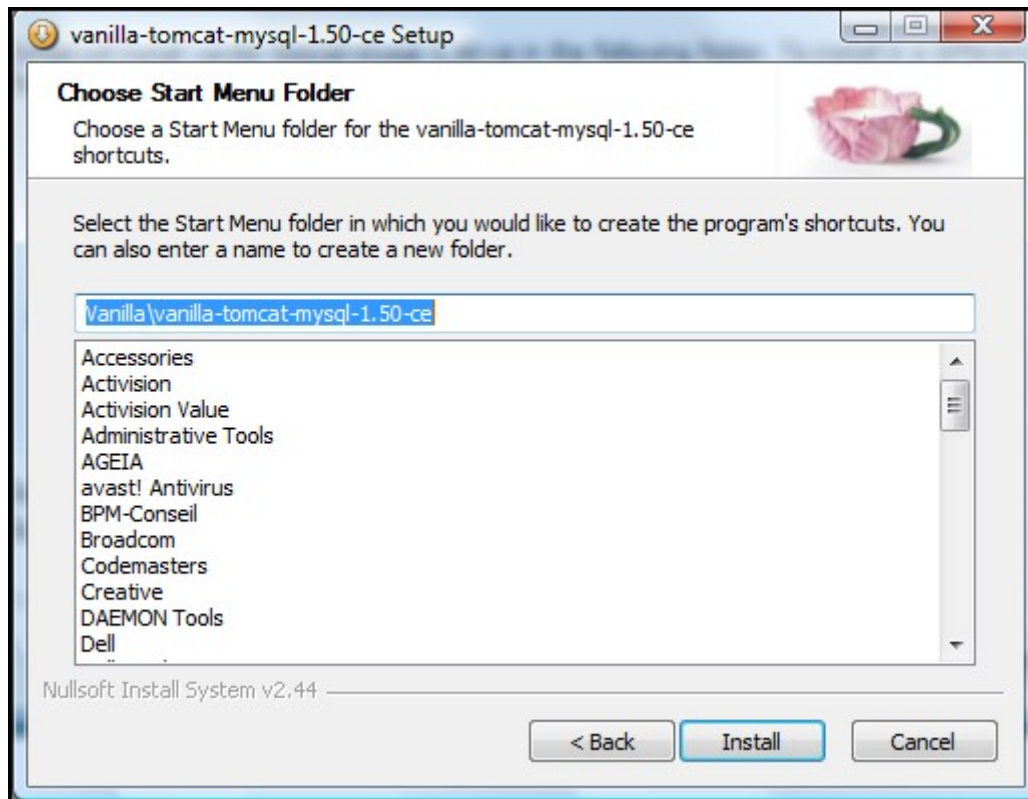


Installation path



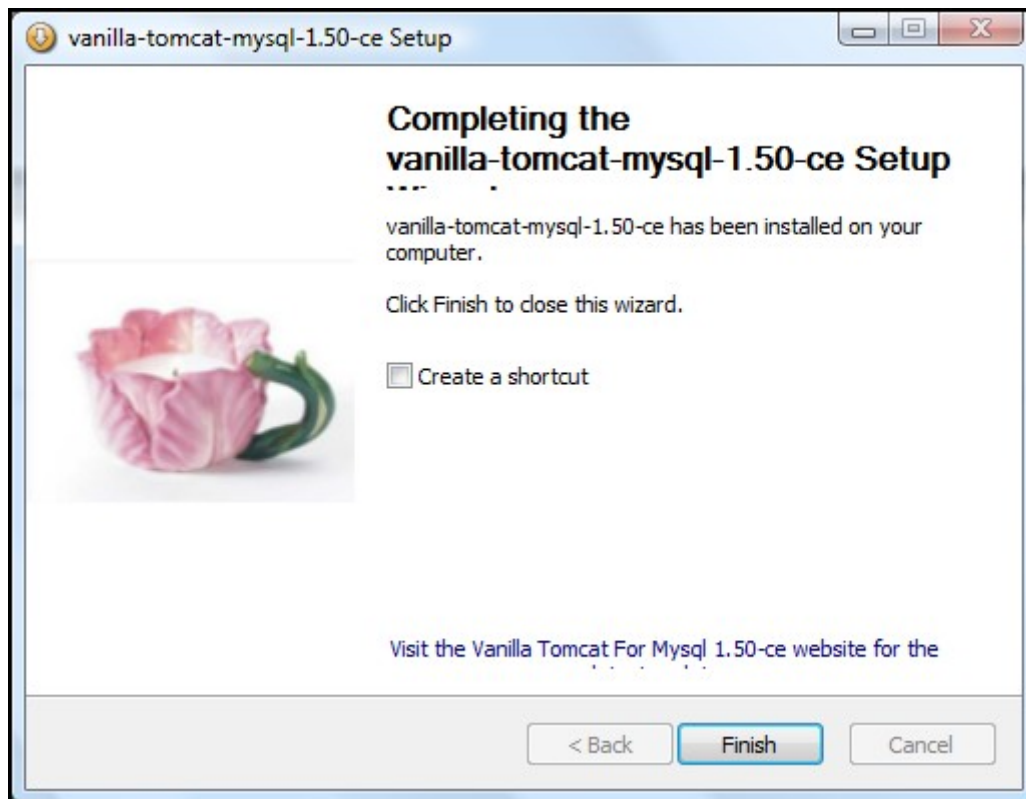


Menu Definition





Shortcut definition





Test of Vanilla Server

Start the server : run start-vanilla program (either .bat, .cmd or .sh extension, based on your Operating System)

Connect against the Vanilla server : <http://localhost:8080/vanilla/>
(this assume you have installed Vanilla locally)

Vanilla 1.50 interface



Welcome to vanilla portal

Sentinelle 1.50

To have more informations:

- All the documentation can be found in <vanilla-tomcat>\webapps\documentation
- You can get help from the community of vanilla's users
- Read the release notes to know quickly which are the news features
- You can visit our web site [BPM-conseil online](#)

Log in as:

- a super user
- a designer
- an end user

username:

password:

"Supplied free of charge with no support, no certification, no maintenance, no warranty and no indemnity by BPM-conseil or its Certified Partners. © 2005-2009 All rights reserved."

This interface can be customize, to have more information read [Vanilla_1.5_How_to_customize_home.pdf](#)



Post Installation Instruction:

to have more information read the upgrade documentation.

Using Enterprise Services package, modify different location (for Birt Viewer, ...) using the « VanillaSetup » perspective (see bellow). Usually, only 2 entries need to be modified :

-BirtViewerPath

-Vanilla Portal Path

Start your server

1. Open the enterprise services

Choose a database connection and a repository

Login

Password

Repository

Preferences Url

On the first start-up change this url if it is not good

Choose a database connection and a repository

Login

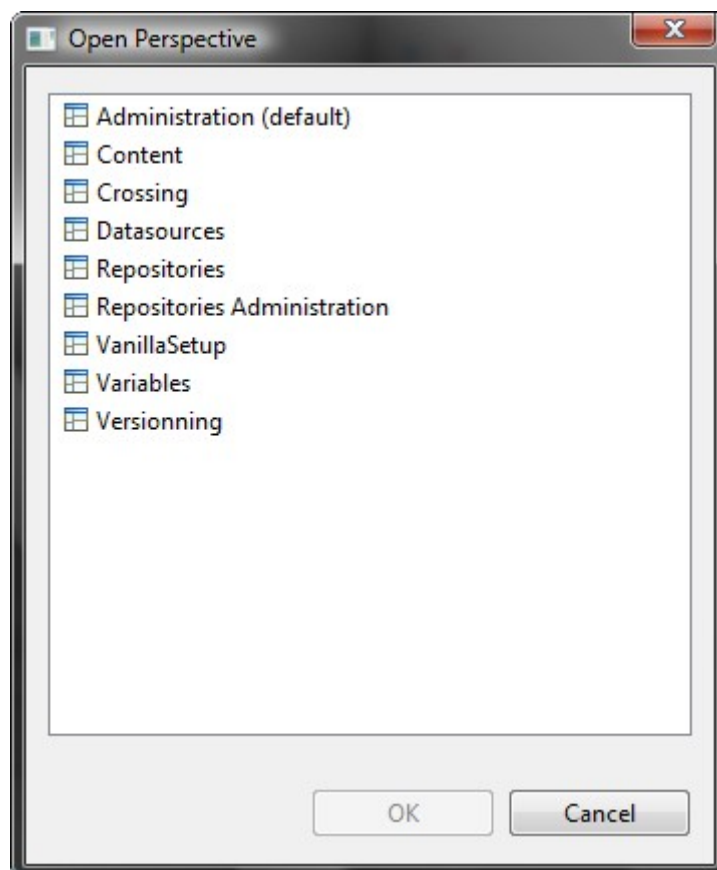
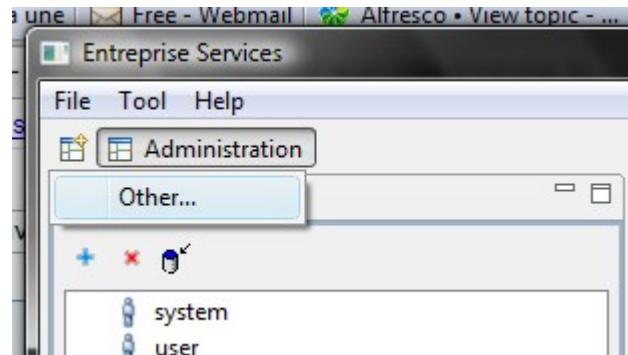
Password

Repository

Preferences Url



2. Open the VanillaSetup view





3. Set your own parameters

The screenshot shows the 'Enterprise Services' application window with the 'VanillaAdministrator' tab selected. The window contains a list of configuration parameters, each with a corresponding input field. The parameters and their values are as follows:

Parameter	Value
Authentication	true
FreeAnalysis URL	http://localhost:8080/FreeAnalysisWeb
FreeAnalysisSchemaDesignerWeb URL	http://localhost:8080/FreeAnalysisSchemaDesigner
FreeWebReport URL	http://localhost:8080/FreeWebReport
FreeDashboard URL	
FreeMetrics URL	
Preferences URL	http://localhost:8080/Preferences
BIScheduler URL	
Workbook URL	http://localhost:8080/workbook/
Vanilla Portal URL	http://localhost:8080/vanilla
Vanilla Portal Path	C:\vanilla-tomcat-mysql-1.50-ce\webapps\vanilla.war
BirtViewer URL	http://localhost:8080/WebView/
BirtViewer Path	C:\vanilla-tomcat-mysql-1.50-ce\webapps\WebView.war
Orbeon Url	http://localhost:8080/orbeon/xforms-jsp/
Orbeon path	C:\vanilla-tomcat-mysql-1.50-ce\webapps\orbeon\xforms-jsp

At the bottom of the configuration area, there is an 'Update' button.

The installation server's path