



# Vanilla

Open Source Business Intelligence

Platform Installation

Version 1.31

February 2009  
Vanilla Version 1.31  
Patrick Beaucamp  
BPM Conseil  
Contact : [patrick.beaucamp@bpm-conseil.com](mailto:patrick.beaucamp@bpm-conseil.com)



## Index

Introduction.....	3
Vanilla Download.....	4
Additional downloads.....	4
MySQL database installation.....	5
Account.....	5
Database installation.....	5
Vanilla Server installation.....	6
Test of Vanilla Server.....	11
Post Installation Instruction.....	12



## Introduction

Vanilla is the Open Source Business Intelligence Platform sponsored by BPM-Conseil.

Vanilla provides an integrated and secured workspace to deliver business intelligence documents to end users (documents that leverage the information stored in enterprise database).

Document [BPM\\_Vanilla\\_Presentation\\_User\\_EN.PDF](#) provides detailed informations on every kind of BI document supported by the platform (reports , Olap views, dashboards , key performance indicators and maps) and on the functions available et to manipulate document from the BI Portal.

Along with those user features, Vanilla platform provides packages for BI developers & BI administrators :

- FreeMetadata : component to create an abstraction layer between database and business views, where developer can secure access to different resources using group security
- BI Profiling : component to define profiling and data quality criterias for data exposed in Metadata documents.
- BI Scheduler : scheduler based on quartz to manage the production and delivery of various BI components and BI (ETL job, report or dashboard creation, data profiling execution, KPI database alimentation)
- BI Workflow : package to create and manage BI process, based on proven Bonita platform, that allow definition of process such as « data extraction /data validation/data distribution », involving automatic process & manual validation
- «Enterprise Service » : administration package that provides features such as deployment packages management between servers, impact analysis on different objects, security of various documents and direct access to documents (stored in XML).

All thos features are described in document [BPM\\_Vanilla\\_Presentation\\_Developer\\_EN.pdf](#)

**Vanilla specificity stands in high productivity components for developers & administrators, that reduce the cycle « prototype / development / production / maintenance » of any BI project.**

This document is about Vanilla installation, using MySQL Version of Vanilla 1.31 community edition



## Vanilla Download

Vanilla 1.31 is available for download at <http://www.bpm-conseil.org/vanilla131>

To run a Vanilla server, you need 2 packages :

MySQL database schema <http://www.bpm-conseil.org/vanilla131/databases.zip>

Vanilla server : <http://www.bpm-conseil.org/vanilla131/vanilla-tomcat-mysql-1.31-ce-setup.exe>

### ***Additional downloads***

In order to develop Vanilla BI application, you need to download & install the various design packages : <http://www.bpm-conseil.org/vanilla131/designer-1.31/>

In order to manage Vanilla server & application, you need to download & install the various admin packages : <http://www.bpm-conseil.org/vanilla131/administrator-1.31/>

If you want to test Vanilla 1.31 outside of MySQL area, simply download, unzip and run the embeded HSQL version : <http://www.bpm-conseil.org/vanilla131/vanilla-tomcat-hsql-1.31-ce.zip>



## MySQL database installation

### ***Account***

Using MySQL 5.0 or later, first create a user :

login name : biplatform

password : biplatform

Using this standard user/password will prevent you from performing time consuming modification in parameter files to modify the standard account that manage Vanilla repositories. If you want to use another MySQL account, please refer to the advanced installation guide to understand how Vanilla and its repositories are configured.

### ***Database installation***

This section is for new Vanilla installation. To upgrade from Vanilla 1.2x or from Vanilla 1.3x, please refer to the upgrade notes.

Using MySQL admin or any other MySQL interface, simply restore the 6 repositories :

repository.sql : mandatory to run Vanilla server

vanilla.sql : mandatory to run Vanilla server

sampledata.sql : sample database, : mandatory to run Vanilla examples

scheduler.sql : scheduler database (optional)

freemetrics.sql : KPI database (optional)

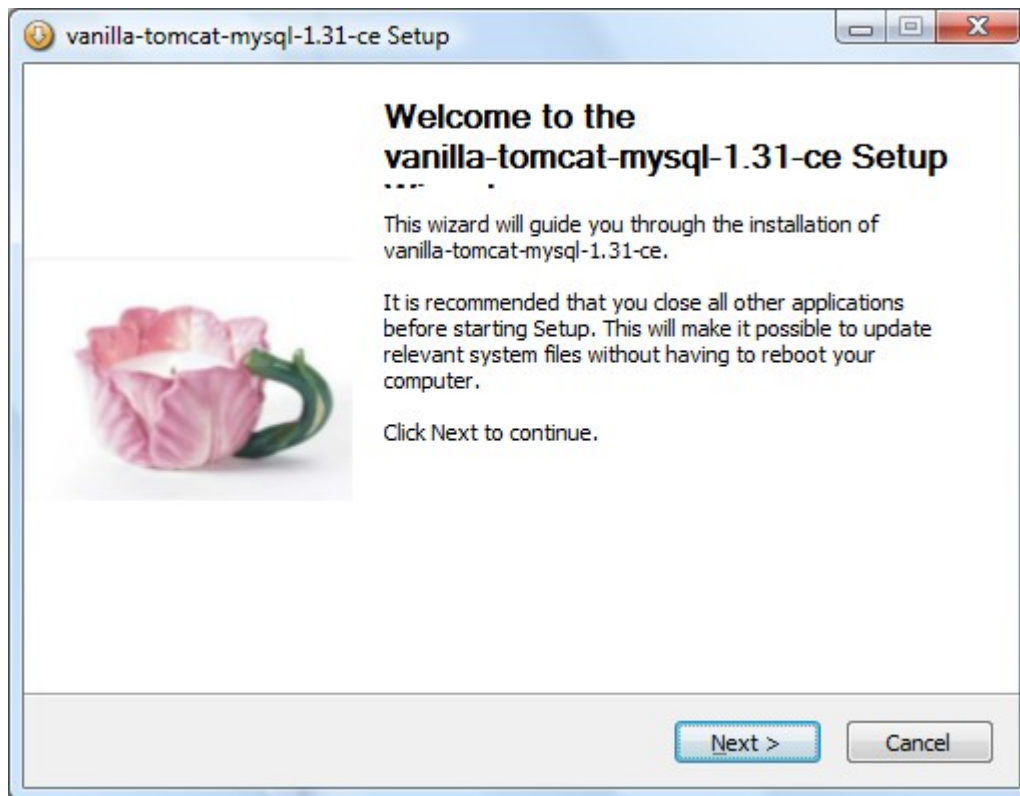
profiling.sql : : profiling database (optional)



## Vanilla Server installation

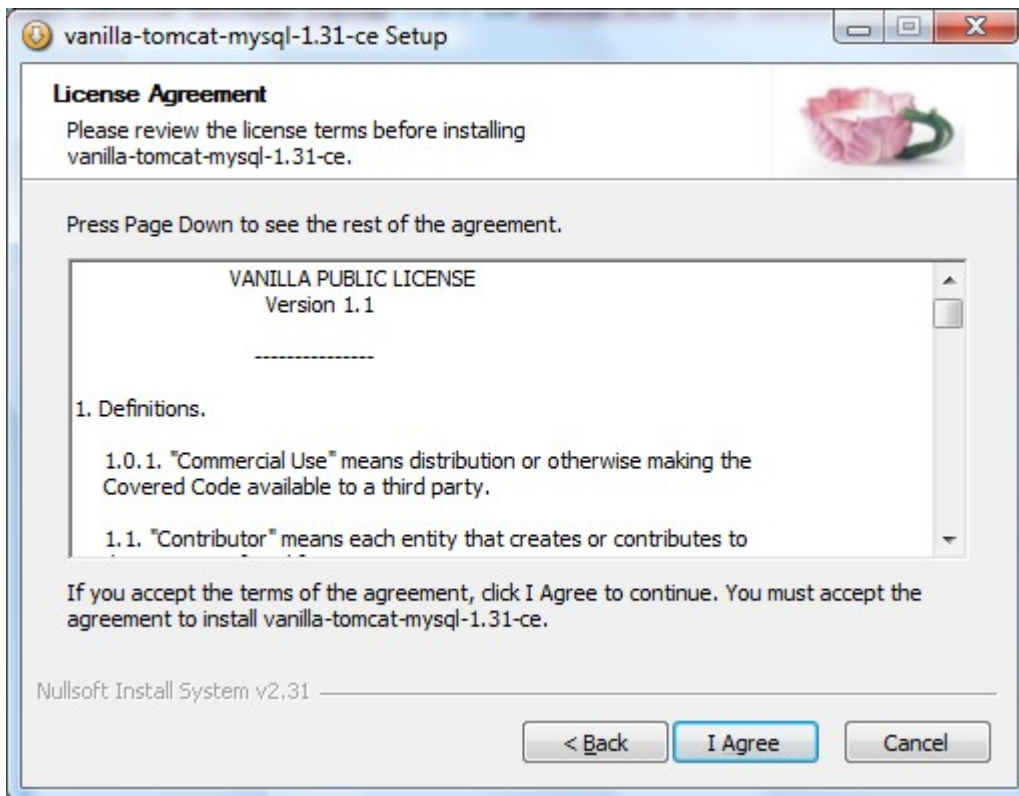
Run package `vanilla-tomcat-mysql-1.31-ce-setup.exe` and follow the instruction

### Installation welcome interface



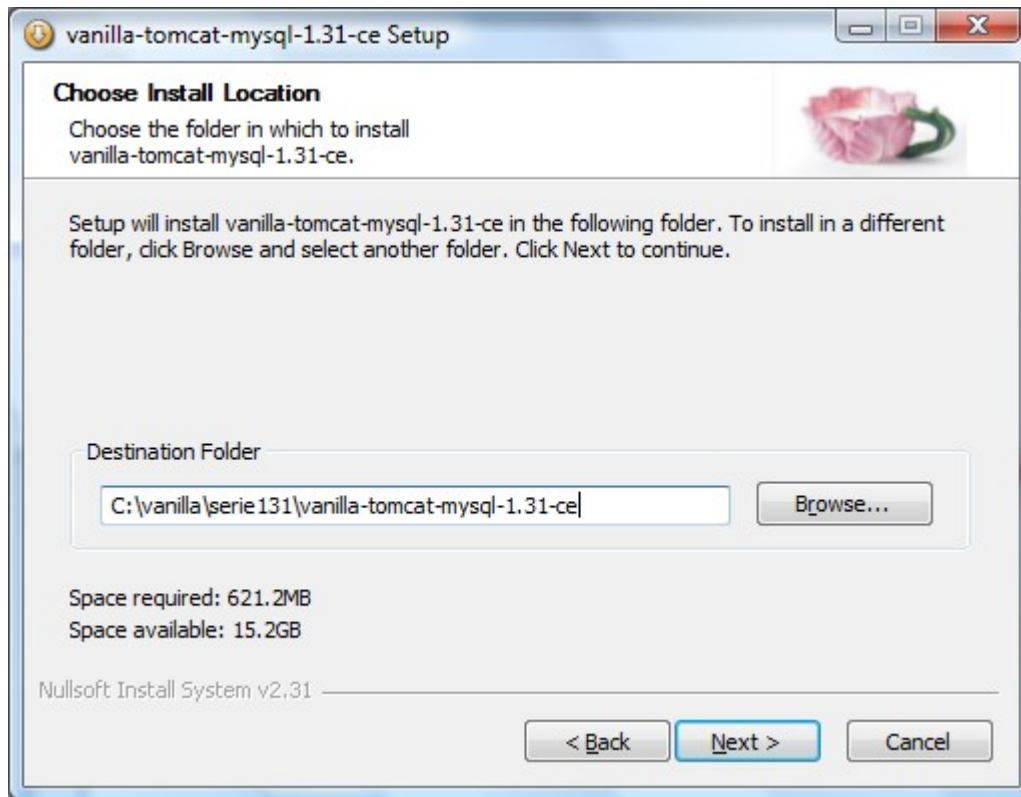


## Vanilla Licence agreement



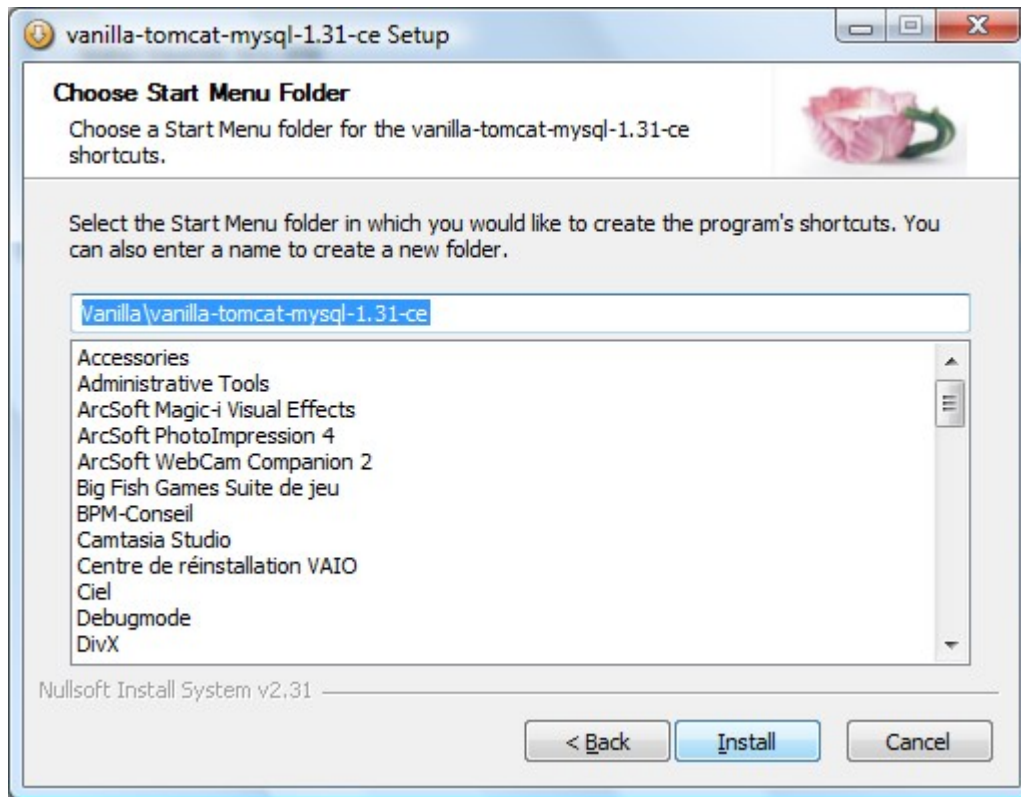


## Installation path



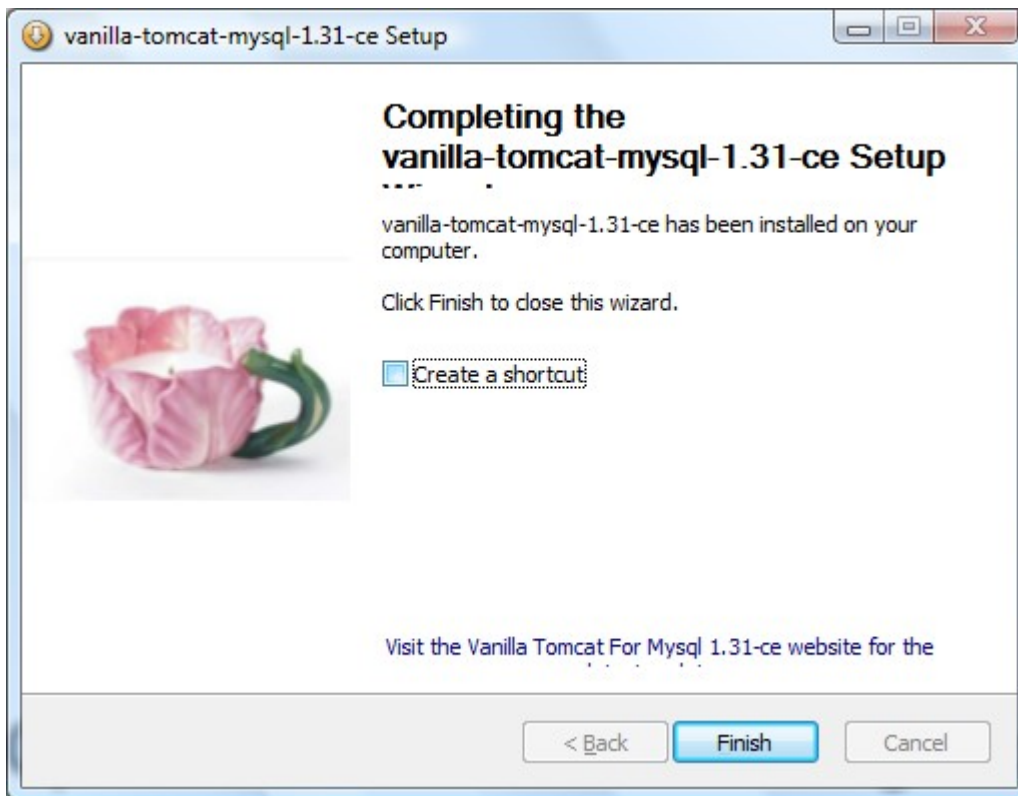


## Menu Definition





## Shortcut definition





## Test of Vanilla Server

Start the server : run start-vanilla program (either .bat, .cmd or .sh extension, based on your Operating System)

Connect against the Vanilla server : <http://localhost:8080/vanilla/>  
(this assume you have installed Vanilla locally)

### Vanilla 1.31 interface

The screenshot shows the Vanilla 1.31 web interface in a Mozilla Firefox browser window. The browser's address bar displays <http://localhost:8080/vanilla/>. The page features a blue background with a white header area containing the Vanilla logo (a pink flower) and the text "vanilla". Below the logo, it says "Hurricane 1.31". On the right side of the header, there is a "Select a language..." dropdown menu. The main content area is divided into three sections: "More informations ?" with links for "Release Notes", "Download softwares", "Community support", "Commercial support", "BPM-conseil", and "Download documentation"; "log in as :" with options for "Administrator (system/system)", "Designer (designer/designer)", and "Demo (demo/demo)"; and a "Login" form with "Username" and "Password" input fields and a "Login" button. At the bottom of the page, there is a footer with the text: "Supplied free of charge with no support, no certification, no maintenance, no warranty and no indemnity by BPM-conseil or its Certified Partners. © 2005-2009 All rights reserved." The browser's status bar at the bottom left shows "Terminé" and the bottom right shows the McAfee SiteAdvisor icon.



## Post Installation Instruction

Using Enterprise Services package, modify different location (for Birt Viewer, ...) using the « VanillaSetup » perspective (see bellow). Usually, only 2 entries need to be modified :

- BirtViewerPath
- Vanilla Portal Path

