



Vanilla

Open Source Business Intelligence

Version 1.31

Post installation configuration

February 2009

Vanilla Version 1.31

Patrick Beaucamp / Gaël Charbonnier / Ludovic Camus

BPM Conseil

Contact : patrick.beaucamp@bpm-conseil.com



Index

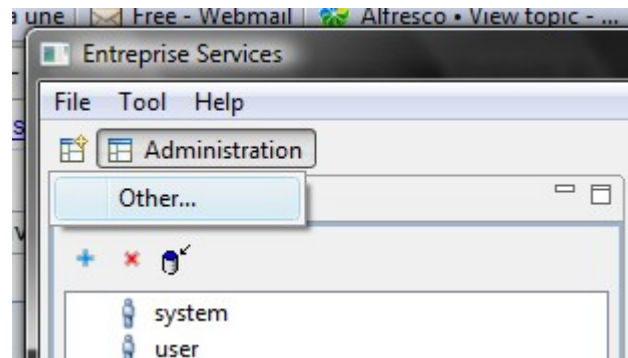
I. Vanilla setup.....	3
1. Open the entreprise services	3
2. Open the VanillaSetup view.....	3
3. Set your own parameters.....	4
II Databases connections setup.....	5
1. Open the VanillaConfigureur.....	5
2. Set the informations above:.....	6
3. Set the database informations.....	6



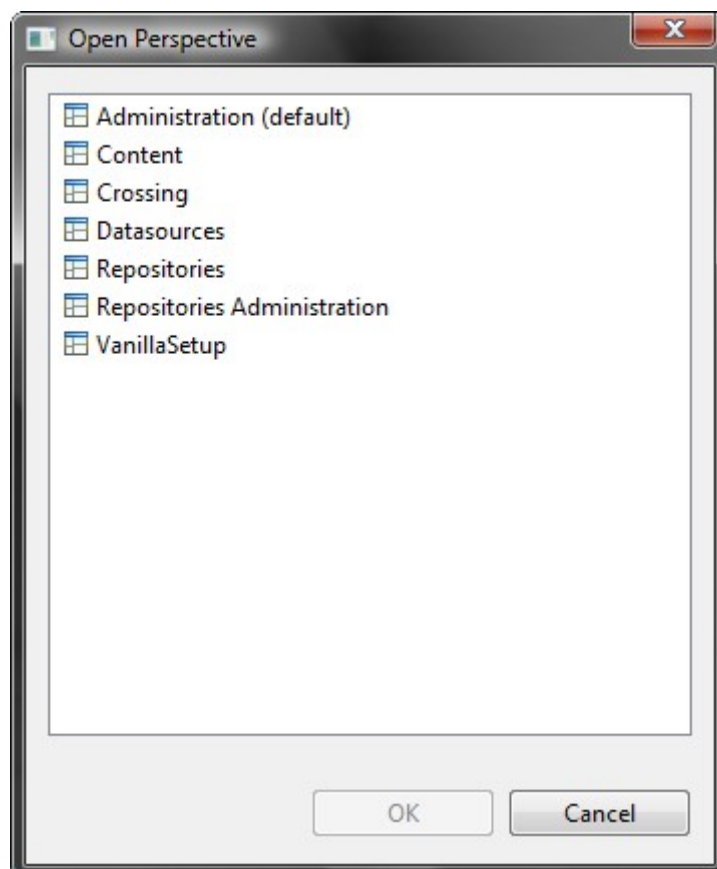
If you are not using the default setting, or if you want to update an old version.

I. Vanilla setup.

1. Open the enterprise services



2. Open the VanillaSetup view





3. Set your own parameters

The installation server's path

Parameter	Value
Authentication	true
BirtViewerPath	C:\vanilla-tomcat-mysql-1.31\webapps\WebViewer.war
FreeAnalysis URL	http://localhost:8080/FreeAnalysisWeb
BirtViewer URL	http://localhost:8080/WebViewer/
FreeDashboard URL	
FreeAnalysisShemaDesignerWeb URL	http://localhost:8080/FreeAnalysisSchemaDesigner
FreeMetrics URL	
Preferences URL	http://localhost:8080/Preferences
BIScheduler URL	http://localhost:8080/scheduler/
FreeWebReport URL	http://localhost:8080/FreeWebReport
Workbook URL	http://localhost:8080/workbook/
Vanilla Portal URL	http://localhost:8080/vanilla
Vanilla Portal Path	C:\vanilla-tomcat-mysql-1.31\webapps\vanilla.war

Update

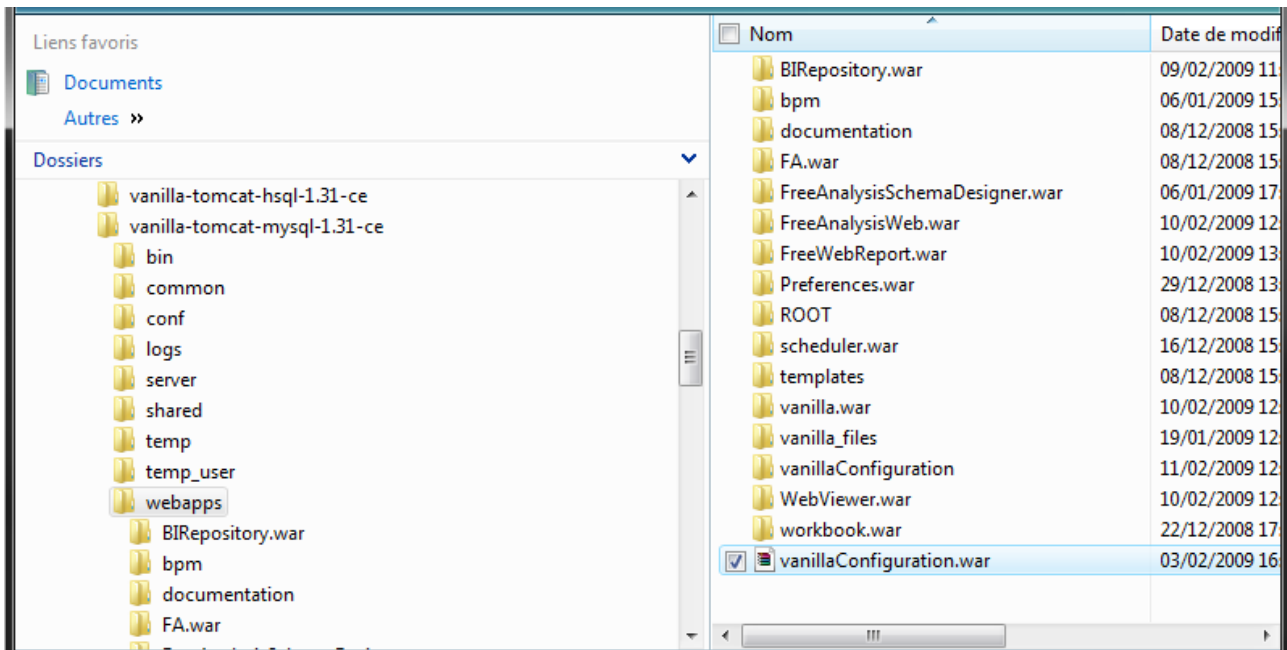
The installation server's path



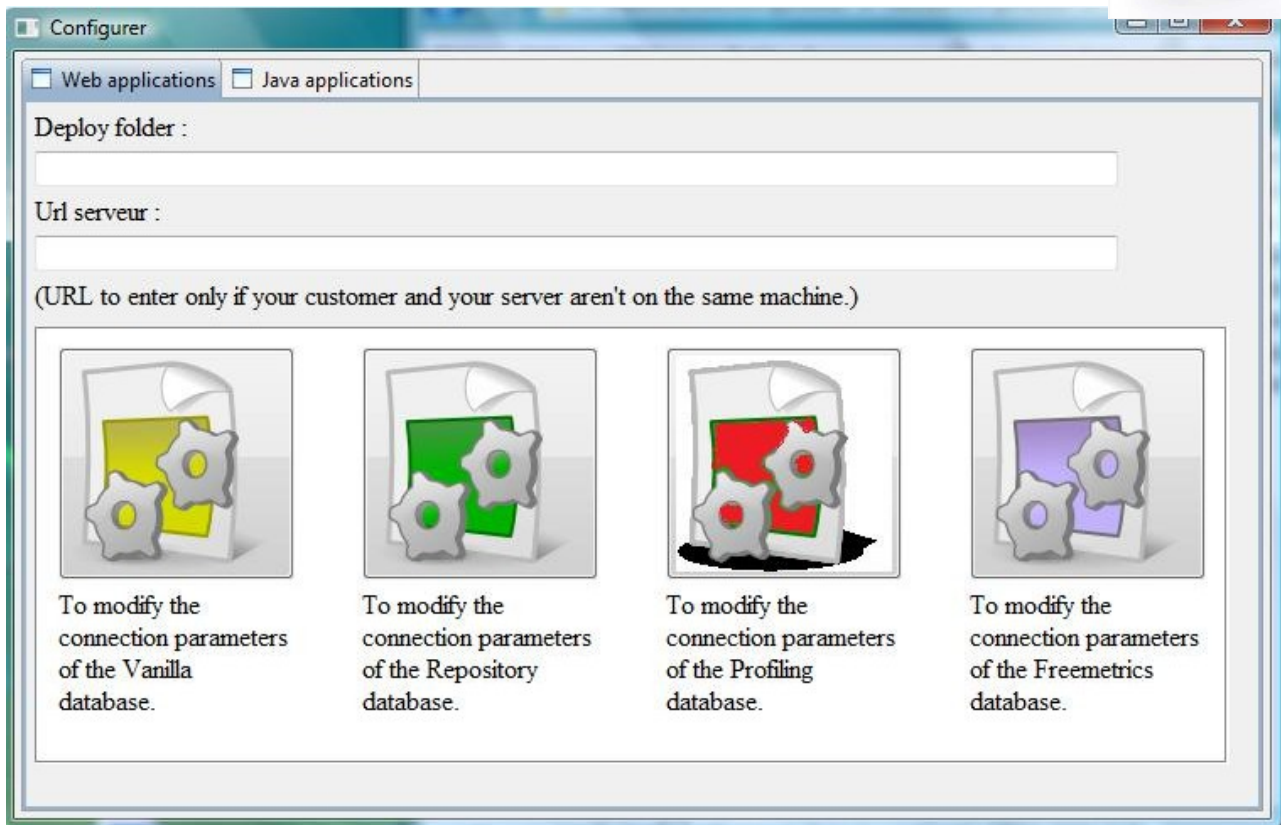
II Databases connections setup.

If your server is not in your own computer.

- Stop your server
- Copy/Paste the vanillaConfiguration.war, in the <tomcat-vanilla>\webapps folder.
- Star the server.



1. Open the VanillaConfigureur



2. Set the informations above:

Deploy folder :

This information must be set. Enter the <tomcat-vanilla>\webapps dir.

Url serveur :

(URL to enter only if your customer and your server aren't on the same machine.)

This field is optional, you have to set it only if your server is not in your computer.

3. Set the database informations.



Driver Name :

Driver Class Name :

Host :

Port :

DataBase :

Login :

Password :

For example, with the vanilla database.

- Driver Name: MySQL/Hypersonic/.....
- Host: localhost / ip / server name
- Port: 3306 or your own port
- DataBase (name):vanilla (Default)
- Login: the user which can access to the vanilla database

Then click on the « OK » button and wait